



GOLDEN EAGLE LUXURY TRAINS

VOYAGES OF A LIFETIME BY PRIVATE TRAIN™

Jewels of the Silk Road

2025 - 2026 DEPARTURES

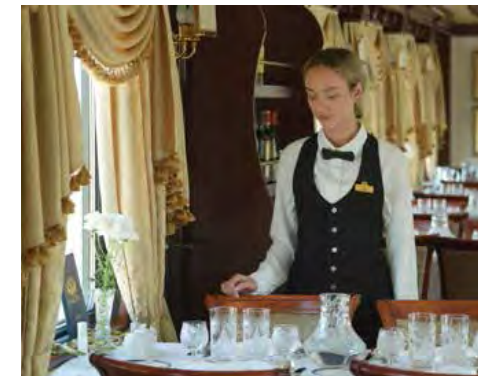


The Golden Eagle

The Golden Eagle is our fully en-suite private touring train that brings unprecedented luxury to the world's great railway journeys.



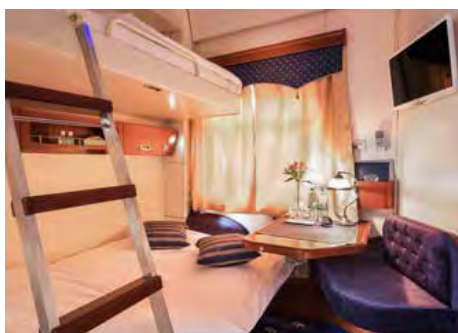
The Golden Eagle
offers a truly
luxurious journey



Aboard the Golden Eagle private train you can expect well-appointed en-suite cabins, fine dining and elegant surroundings – no matter where you choose to explore.

First-class service is included as standard, with a personal cabin attendant service, available at all times, to look after all of your needs.





Silver Class

The Golden Eagle has been carefully designed with emphasis on your comfort, relaxation and enjoyment.

Silver Class cabins, which are more compact at 60 sq ft (5.5 sq metres), feature a small double lower bed and a single upper bed as well as DVD/CD player, LCD screen, safe, individual air-conditioning, wardrobe and large picture window. The Silver Class cabins have private en-suite wet room with a washbasin, toilet and shower.



Gold Class Dimensions

Cabin Area	77 sq ft (7 sq m)
Cabin Length	11ft 8ins (3.6m)
Cabin Width	6ft 7ins (2m)
Lower Bed Width	4ft 5ins (1.35m)
Bed Length	6ft 2ins (1.9m)
Upper Bed Width	2ft 9ins (85cm)



Silver Class Dimensions

Cabin Area	60 sq ft (5.5 sq m)
Cabin Length	8ft 8ins (2.6m)
Cabin Width	6ft 7ins (2m)
Lower Bed Width	3ft 6ins (1.1m)
Bed Length	6ft 2ins (1.9m)
Upper Bed Width	2ft 9ins (85cm)

Gold Class Specification

- Sleeps 1 or 2 with lower UK double bed (4'5") & upper berth (2' 9")
- Remote controlled air-conditioning and heating
- Recessed lighting and wardrobe
- Personal safe
- Private en-suite bathroom with full power shower & underfloor heating
- Bathrobes, slippers & luxury toiletries provided
- DVD/CD player with LCD screens
- Towels and linens changed every second day or daily on request
- Complimentary tea, coffee and mineral water in cabin available at all times
- Drinks in the Bar Lounge Car included from the Standard Bar List
- Laundry service available at an additional charge

Silver Class Specification

- Sleeps 1 or 2 – with a lower berth (3'6") and upper berth (2'9")
- Remote controlled air-conditioning and heating
- Recessed lighting and wardrobe
- Personal safe
- Private en-suite bathroom with 'wet room' style shower and toilet
- Bathrobes, slippers and luxury toiletries provided
- DVD/CD player with LCD screens
- Towels and linens changed every second day or daily on request
- Complimentary tea, coffee and mineral water in cabin available at all times
- Drinks in the Bar Lounge Car included from the Standard Bar List
- Laundry service available at an additional charge

Imperial Suite

Exemplary service starts with a complimentary bottle of Dom Perignon champagne when you board the train to toast the start of your wonderful adventure.

Imperial Suites are the most spacious cabins available on board the Golden Eagle measuring 120 sq ft (11.1 sq metres) and benefiting from a large and luxurious UK King Size bed as well as a lounge area with dressing table.

Imperial Suite facilities include a private en-suite bathroom with power shower and the luxury of underfloor heating, individual air-conditioning, wardrobe, DVD/CD player with LCD screen, complimentary fully stocked minibar, safe, small library and two large picture windows to watch the world go by.

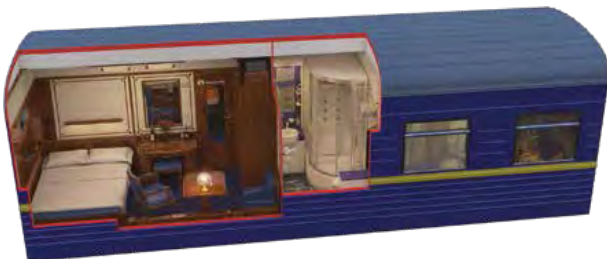
Imperial Suite guests will also benefit from the option of a private guide and chauffeured car service in most of the places we visit along the route. However, in locations where there are a limited number of experienced and qualified tour guides available, we may offer a shared car service among Imperial Suite guests. Guests also benefit from the inclusion of drinks from the Standard and Premium Bar List (excluding premium wines) in the Bar Lounge Car, a laundry service and upgraded room types at the hotels which are featured in the itinerary.

Imperial Suite Dimensions

Cabin Area	120 sq ft (11.1 sq m)
Cabin Length	17ft 4ins (5.3m)
Cabin Width	6ft 7ins (2m)
Bed Width	5ft (1.5m)
Bed Length	6ft 2ins (1.9m)
Cabins Per Car	1 Imperial Suite (+ 3 Gold Class Cabins)
	or 1 Imperial Suite (+ 4 Silver Class Cabins)
	or 1 Imperial Suite (Imperial Suite Carriage)

Daytime Layout

Night-time Layout



Imperial Suite Specification

- Sleeps 2 in UK King Size bed
 - Sitting area
 - Remote controlled air-conditioning and heating
 - Recessed lighting and wardrobe
 - Dressing table
 - Personal safe
 - Complimentary minibar
 - DVD/CD player with LCD screens
- Private en-suite bathroom with full power shower & underfloor heating
 - Bathrobes, slippers, hairdryer & luxury toiletries provided
 - Towels and linens changed every second day or daily on request
 - In-cabin dining available on request
 - Complimentary tea, coffee and mineral water available at all times
- Drinks from the Bar Lounge Car included from the Standard and Premium Bar List (excluding Premium Wine List)
 - Private car and guide options in selected cities for off-train excursion programme
 - Laundry service included



Imperial Suite & Gold Class Carriage Floorplan
(Imperial Suite also available in Silver Class Carriage)



Dining On Board

Welcome to the *Golden Eagle*, where cuisine and service combine to offer an unparalleled dining experience.

A particular delight of the Golden Eagle is our beautifully appointed restaurant cars, a delightful venue in which to enjoy meals skillfully prepared by our Executive Chef and his on board restaurant team using the very best in ingredients, locally sourced wherever possible. Depending on the number of guests on board, one or two of our restaurant cars will be on every departure.

Enjoy the delights of an on-train breakfast each morning – the wonderful aroma of freshly-baked bread permeates the dining car, a wide selection of pastries, cereals, freshly squeezed orange juice and cold plates are available from our bountiful buffet. Alternatively enjoy a cooked breakfast brought to your table by our waiting staff, all complemented by steaming hot tea and coffee.

If you are in need of a more relaxed start to the day, then opt for our continental breakfast basket with tea or coffee to enjoy at leisure in your cabin.

For lunch and dinner, you will be welcomed by our resident waiting staff

and enjoy fine food, great wines and attentive service in the welcoming atmosphere of the dining car. We offer a culinary experience that reflects the very essence of the countries we travel through, as well as international cuisine. Vegetarian and other dietary options are also available.

All our meals at lunch and dinner are complemented by an excellent choice of wines from around the world, personally selected by our Company Founder, Tim Littler, along with mineral water, beer and soft drinks. For that special occasion we also have available to purchase a selection of premium fine wines priced between \$50 and \$795 per bottle.

Meals on board are a relaxed affair as the restaurant cars can accommodate all our guests in a single sitting. Throughout the journey there is an informal dress code, so you can enjoy our culinary experiences in convivial and relaxed surroundings and with our open seating policy you can dine wherever, and with whomever, you please.



Relax In Our Bar Lounge Car

The Social Heart of the Golden Eagle: The Bar Lounge Car

Unwind in comfortable surroundings and watch the world go by as you get to know your fellow passengers and begin long-lasting friendships. Perhaps read a novel from our library to pass away the time or challenge your friends to a game of bridge.

Enjoy the delights of morning or afternoon tea in the Bar Lounge Car with delicious cookies freshly baked by our chefs.

It is also here that our Tour Manager will also organise a programme of activities. Passengers will receive printed daily itineraries throughout the tour detailing train arrival and departure timings, latest weather forecasts for the next destination and information on the following day's excursions and activities.



In the evening enjoy the sounds of the resident pianist playing on the baby grand piano in the Bar Lounge Car. From time to time we also host special concerts and every night the bar stays open until the last person leaves.



Jewels of the Silk Road

KAZAKHSTAN • UZBEKISTAN • TURKMENISTAN



Journeying aboard the Golden Eagle, we will travel through three of the magnificent ‘Stans’ – a fascinating patchwork of countries, stitched together by a shared history of Sovietisation, yet fiercely independent in identity.

From the magnificent mosques and bustling bazaars of Uzbekistan and Turkmenistan to the breath-taking verdant expanse and ethereally tranquil landscapes of Kazakhstan, this incredible 8-day adventure is your invitation to one of the world’s greatest train journeys.



Tour Includes

- 1 Hotel night in Ritz Carlton Almaty (or similar)*
- 5 nights onboard Golden Eagle

Day by Day Schedule

DAY 1	Ashgabat	DAY 5	Samarkand
DAY 2	Ashgabat & Darvaza	DAY 6	Tashkent
DAY 3	Khiva	DAY 7	Almaty
DAY 4	Bukhara	DAY 8	Almaty

Tour Dates

September 10 – September 17, 2025

September 22 – September 29, 2026

DEPOSIT REQUIRED	\$1,750		\$3,000		\$6,000	
	SILVER CLASS		GOLD CLASS		IMPERIAL SUITE	
	TWIN	SINGLE	DOUBLE	SINGLE	DOUBLE	SINGLE
September 10 - September 17, 2025	\$14,595	\$21,995	\$18,895	\$31,195	Request	Request
September 22 - September 29, 2026	\$15,300	\$23,100	\$19,800	\$32,800	Request	Request

Prices shown are per person in US Dollars. Payment also available in Euros and Pound Sterling.



1 Ashgabat Turkmenistan

Arrive at Ashgabat Airport and be transferred to your hotel (if applicable). The capital of Turkmenistan is known as the 'Las Vegas of the Kara Kum'. Situated between the Kara Kum desert and the Kopet Dag mountain range, Ashgabat is a relatively modern city built upon the ruins of the Silk Road city of Konjikala and the Soviet city built after the devastating earthquake of 1948.

Upon arrival we will board the Golden Eagle. Once settled into our cabins, lunch will be served in the Restaurant Cars. This afternoon we have the opportunity to explore Ashgabat and the city's extravagant fountains, golden domes and towering modern buildings, which appear strangely incongruous in this desert setting. Highlights on our visit include a trip to the National Museum and Wedding Palace to learn more about Ashgabat's history and culture.



2 Ashgabat & Darvaza Turkmenistan

A further morning of touring in Turkmenistan features a visit to nearby Nisa, an ancient settlement of the Parthians, and was declared as a UNESCO World Heritage Site in 2007.

The Golden Eagle departs Ashgabat at lunch and makes a scheduled stop tonight at Ichoguz. We leave the train and

make a short journey to Darvaza's famous burning gas crater, a spectacular sight best seen at night. Located in the middle of the Kara Kum desert where the area is rich in natural gas, the 70-metre wide crater is known by the locals as the 'Door to Hell' and has been burning for over 40 years. A unique experience that is not to be missed.



3 Khiva Uzbekistan

Our train travels towards Urgench, from where we transfer to the ancient city of Khiva, founded 2,500 years ago. As one of the Silk Road's most important trading posts and now a World Heritage Site, it lies at the crossroads of the routes between Mongolia, Russia, China and Persia.

A truly magnificent sight to behold, it rises out of the desert to reveal a wealth of impressive architecture. Stepping back in time, we discover its impressive mosques, bazaars and minarets within Khiva's ancient walls.

4 Bukhara Uzbekistan

Bukhara is quite simply outstanding. Like Khiva, UNESCO sponsored the renovation of much of the city for its 2,500th anniversary in 1999.

The highlight of this wonderful tour is a visit to The Ark, a fortified residence of the Emirs of Bukhara – the despotic and ruthless leaders who ruled until Soviet times. Our touring programme will also transport us to the grandeur of Poi-Kalyan Square, home to the iconic Kalyan Mosque, a living relic of traditional Islamic design. Stroll through the mosque's large maksura rooms, pillar-domed galleries,



and deeply recessed niches, and you will be transported to a bygone era.

Immerse yourself in the lively pulse of the city as we explore the bustling Trading Domes of Bukhara and gather at Lyabi-Hauz Square, a vibrant social hub cocooned by a pool and embraced by the soothing shade of mulberry trees and local tea rooms.

This evening, weather permitting, we will enjoy a barbecue on the station platform before our train departs – a unique farewell to an incredible city.



5 Samarkand
Uzbekistan

More so than any other town, just the mention of Samarkand instantly conjures up evocative images of the Silk Road. Founded in the 6th century BC, Samarkand's stunning architecture hints at its former status as one of the most important cities in Asia and is particularly noted for its architectural remains from the 14th to the 17th century, when it flourished as the fabled capital of the Mongol empire of Timur and his successors.

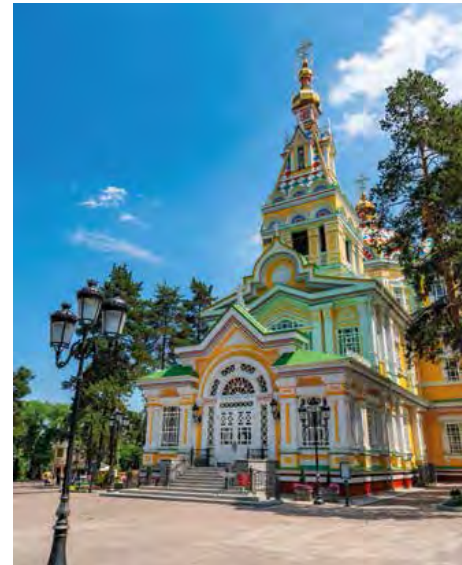
Today we will visit some of its most significant sites including Registan Square, the refined elegance of the beautifully proportioned Bibi Khanum Mosque and the Ulug Beg observatory, one of the earliest Islamic astronomical observatories built in 1428.

Prepare for an unforgettable evening in Samarkand that will leave an indelible mark on your memory. As the sun sets and night descends upon this ancient city, we will whisk you away to the illuminated Registan Square, where an extraordinary spectacle unfolds. From your prime front-row seats, you'll be treated to a dazzling light show that weaves the rich tapestry of Samarkand's history and significance.

6 Tashkent
Uzbekistan

Tashkent is the capital city of Uzbekistan and we spend time touring this modern Soviet-style city which was rebuilt following the devastating earthquake of 1966. Our tour of the city includes the Old Town, where traditional homes and religious buildings line the narrow streets and here in a small library we'll be privileged to see one of Islam's most sacred relics – the world's oldest Koran. This is followed by a visit to the Railway Museum and the Museum of Applied Arts.

This evening, we enjoy our Farewell Dinner onboard the Golden Eagle as we head overnight to our final destination of Almaty.



7 Almaty
Kazakhstan

This morning, we arrive into Almaty, our final destination and bid farewell to the Golden Eagle.

Today we will take a tour of Almaty including a visit to Panfilov Park, located in the heart of the city, and home to the Zenkov Cathedral, a 19th century Russian Orthodox Church made entirely of wood.

Overnight we stay for one night at the Ritz-Carlton, Almaty, or similar.

8 Almaty
Kazakhstan

Following breakfast, you will be transferred to Almaty Airport for your onward flight.

Why not extend your stay in Almaty with additional nights to explore more of the city and surrounding region at your leisure?

More so than any other town,
just the mention of **Samarkand**
instantly conjures up evocative
images of the **Silk Road**





What's Included in the Tour Price

As far as possible our tours are all-inclusive with no hidden extras. What follows are all those elements which are included in the tour price.

The only extra items you may need to budget for include personal expenses such as International and Internal flights that are not included in the itineraries, visa costs, insurance and laundry.

EXPERIENCED TOUR MANAGERS

Our experienced Tour Managers are selected for their travel knowledge, and their linguistic and organisational abilities allowing you to relax and enjoy your rail cruise. We receive exceptional passenger comments about our Tour Managers and their aim is to ensure you enjoy every minute of your holiday.

ARRIVAL & DEPARTURE AIRPORT TRANSFERS

Arrival and departure transfers are included.

HOTEL AND ON BOARD ACCOMMODATION

Although you will spend much of your time sightseeing or relaxing in the train's public areas, you will find your cabin a welcome retreat at the end of a rewarding day. All hotels are of five-star standard, or the best available.

DRINKS WITH MEALS

A generous drinks allowance, both alcoholic and non-alcoholic, is included with lunch and dinner on and off the train.

BREAKFAST, LUNCH AND DINNER DAILY

All meals are included, starting with dinner on the first day and ending with breakfast on the last day. All departures feature one or two uniquely designed Restaurant Cars where you

can enjoy the excellent waiter-served food and wine. Several times during the tour we will also sample authentic local cuisine with wine and a selection of drinks off the train, which is also included in the tour price.

ON BOARD SERVICE

You can expect service which is attentive, friendly and unintrusive. Your car attendants provide 24-hour housekeeping and bedding turndown services, with one attendant always on duty to assist you and to ensure you are comfortable in your cabin. Complimentary tea, coffee and bottled drinking water are available in your cabin 24 hours a day.

GUIDED OFF-TRAIN EXCURSIONS

The history and culture of the places we visit on our rail cruises will come alive through our expert local guides. All our tours include a wide-ranging sightseeing schedule to make the most of the time you have off the train and bring you closer to the culture, people and history of your destinations. We believe it is the special little touches that help create magical memories.

PERSONAL HEADSETS

On all the off-train excursions, to enhance your enjoyment and insights into the places you visit, you will be provided with a lightweight personal headset on which to listen to your tour guide as you take in the sights. The range of the headset

means that you do not need to worry about missing any of the guide's commentary on your excursion, even if you prefer to wander away from the group.

ON BOARD DOCTOR AND MEDICAL FACILITIES

To give you peace of mind our tours are accompanied by a doctor who travels with us for the entire journey; so you can rest assured that medical assistance is always available. On call 24 hours a day, the doctor is on hand to give primary care as required. In almost every case, the doctor will be English-speaking and registered with the General Medical Council in the UK.

LUGGAGE HANDLING

As you only have to unpack once your luggage and belongings will stay with you on the train throughout the journey but, wherever necessary, portage is included between the hotels and stations.

ALL GRATUITIES

You will not have to worry about tipping on or off the train on your rail journey with Golden Eagle Luxury Trains as all gratuities are included in the tour price.