



GOLDEN EAGLE LUXURY TRAINS

VOYAGES OF A LIFETIME BY PRIVATE TRAIN™



NEW YEAR IN VIENNA

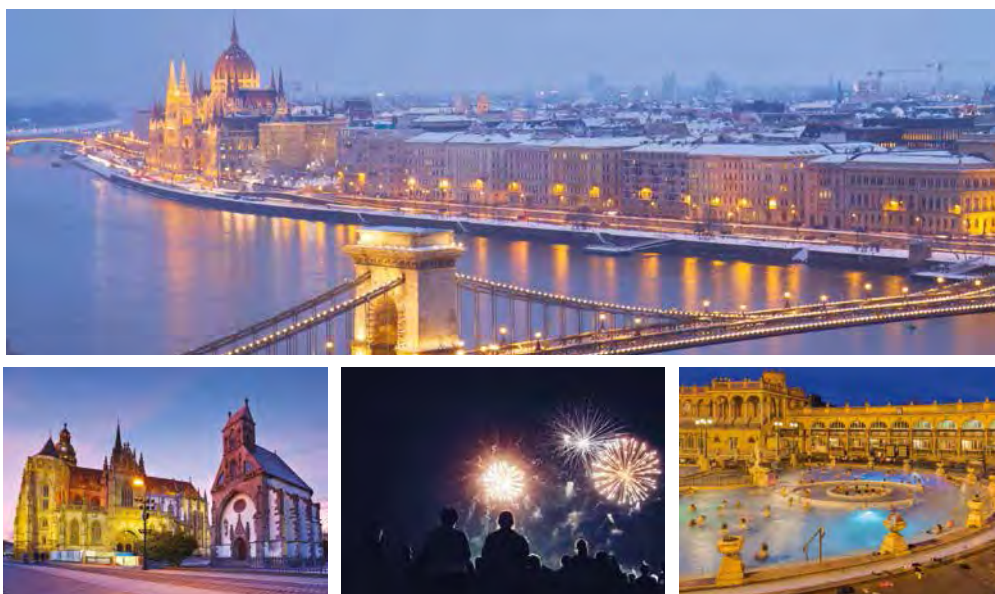
2024 - 2026 DEPARTURES



GOLDEN EAGLE DANUBE EXPRESS

NEW YEAR IN VIENNA

HUNGARY – AUSTRIA – CZECH REPUBLIC – SLOVAKIA – HUNGARY



New Year is a time to celebrate, and what better way to reflect on the year past and ring in the New Year than with festive revelry in an exciting European destination?

Our New Year departure through the heart of Europe on board the Golden Eagle Danube Express offers a sociable group atmosphere combined with sumptuous gala dinners, opera, dancing, fireworks and exclusive regional celebrations that you will cherish.

The city of Budapest is the starting point for this wonderful rail journey, laced with a collection of beautiful medieval and Baroque buildings. Before boarding our exclusive private train, we take time to discover the absorbing history of the once divided cities of Buda and Pest and explore some of its modern-day customs.

From Hungary we venture through winter wonderland landscapes of the valleys beneath the towering Austrian Alps as we traverse across Central Europe to encounter a collection of beautiful capital cities and hidden gems delivering a stylish combination of musical celebration, rich history and architectural treasures on this fascinating New Year's voyage by private train.



GOLDEN EAGLE DANUBE EXPRESS

NEW YEAR IN VIENNA



TOUR SCHEDULES

2024 - 2025

December 28 - January 5

2025 - 2026

December 28 - January 5

2026 - 2027

December 28 - January 5

TOUR ITINERARY

DAY 1 Budapest

DAY 2 Budapest

DAY 3 Budapest & Keszthely

DAY 4 Graz & Vienna

DAY 5 Vienna

DAY 6 Cesky Krumlov

& Prague

DAY 7 Prague

DAY 8 Kosice & Budapest

DAY 9 Budapest

BUDAPEST - KESZTHELY - GRAZ - VIENNA - CESKY KRUMLOV
PRAGUE - KOSICE - BUDAPEST



DAY
1

BUDAPEST

HUNGARY

On arrivals day in Budapest, you will be met and transferred to the Four Seasons Hotel Gresham Palace (or similar) for a two-night stay. Enjoy a welcome reception dinner in the elegant surrounds of this art nouveau landmark where you can meet your fellow travellers on this highly anticipated celebratory journey.

DAY
2

BUDAPEST

HUNGARY

Budapest is two cities separated by the River Danube. The old city of Buda and the imposing Royal Palace dominate the city with stunning views across the Danube to the commercial heart of Pest. Our city tour includes a visit to the Parliament building, followed by a panoramic coach tour of the city, St. Mathias Church, Heroes Square and the City Park. We also make a visit to the Grand Market Hall, the oldest and largest indoor market in Budapest before lunch.

After lunch we visit the Hungarian State Opera House and learn about the building's history and view the stunning interior. This evening guests have 'dine around' options in the hotel for dinner.



DAY
3

BUDAPEST & KESZTHELY

HUNGARY

After breakfast we will transfer from our hotel to board the Golden Eagle Danube Express. We enjoy a morning drinks reception in the impressive Royal Waiting Room at Budapest Nyugati station before boarding our private train. After settling into your luxurious en-suite cabin, we will make our first journey through the winter landscape of Hungary to Balaton Uplands National Park.

Emerging from the National Park we arrive in Keszthely perched at the very western end of Lake Balaton. This picture-postcard town is filled with grand town houses and famously the site of Festetics Palace, a lavish baroque home fit for royalty. After a tour of the palace we'll continue south-west into Austria overnight by train

NEW YEAR'S EVE IN GRAZ & VIENNA

AUSTRIA

Arriving into Austria this morning we begin our exploration of the fantastic city of Graz at the foot of the Austrian Alps. We will transfer by coach to the city centre and have a short walking tour of Graz's range of renaissance courtyards and provincial baroque palaces. As part of our Freedom of Choice programme you can choose to take free time or enjoy a pumpkin seed oil tasting, complete with traditional, locally made bread and wine.

Leaving Graz late morning will be one of the real highlights of the journey. Cameras at the ready as we climb over the stunning Semmering Pass with its 16 viaducts and 15 tunnels.

This UNESCO World Heritage Site provides an unrivalled panorama from the train, a spectacle that transcends ordinary views. After a gourmet lunch on board the train we'll arrive to Vienna to begin our New Year's Eve celebrations.

This afternoon we will have the opportunity to join in with an atmospheric Viennese waltz lesson at the Elmayer Dancing School for the group. No experience necessary!

Tonight, a special New Year's gala dinner will be served inside the beautiful City Hall, Rathaus Vienna accompanying a performance by the renowned Wiener Hofball Orchestra. Music and waltzing will take us through to midnight.

DAY
5

NEW YEAR'S DAY IN VIENNA

AUSTRIA

Happy New Year!

After brunch and a leisurely morning onboard the Danube Express we'll offer Freedom of Choice options with either a visit to the Schönbrunn Palace for a guided tour, then have time at Schönbrunn Christmas Market. Alternatively select a visit to Heiligenkreuz Abbey, situated into the Austrian countryside (approx. 45 minutes) and have a guided tour of the second-oldest Cistercian monastery in the world and the oldest continuously active and inhabited one, founded in 1133, nestled in the Vienna woods.

Both groups will then return to enjoy a beautiful horse-drawn 'fiaker' carriage ride along the cobbled streets of Vienna. Early evening guests will enjoy a special private concert featuring the Vienna Supreme Orchestra before returning to the train for dinner as we head to the Czech Republic.



DAY
6

CESKY KRUMLOV & PRAGUE

CZECH REPUBLIC

This morning we begin our day in the stunning town of Cesky Krumlov, declared a UNESCO World Heritage destination.

The town's old town charm will be only enhanced by a dusting of snow and should make for a beautiful stop on our journey. A short introduction to the town will allow you to explore the town with allocated free time. A perfect opportunity to grab a souvenir or two. There is also the option to visit the Budvar Brewery and enjoy a festive beer tasting!

We continue after a lunch on board the train to as we travel to one of the most beautifully preserved cities in Europe. Spanning the Vltava River, Prague is dominated by its 9th century castle, a stunning sight that can be seen almost anywhere in the city.

Tonight, we have a dinner in the city followed by a private classical concert.



DAY
7

PRAGUE

CZECH REPUBLIC

A full day to explore the city of Prague awaits today. We'll begin with a vintage tram to travel through the 'City of a Hundred Spires' up the hill to Prague Castle and the gothic St. Vitus Cathedral. The castle and its surrounding architectural gems occupy a hillside overlooking the city and river.

Lunch will be served nestled in the architectural treasures of this 'City of a Hundred Spires.' The afternoon is free for you to visit more festive markets or take in more of the iconic sites of the city all within walking distance of the station. Before returning to the train we take a river cruise on Vltava river, that will allows our guests to view the festively illuminated town from different perspective. Dinner will be served on board our private train this evening as we journey into Slovakia.



DAY
8

KOSICE

SLOVAKIA

We start our final day of touring in one of the lesser-known gems of Central Europe, Kosice. The city was voted European Capital of Culture in 2013 and its medieval come cosmopolitan style is slowly drawing more visitors to this former cornerstone of Communist Czechoslovakia. We will take a highlights tour of the city, including the vast oval shaped central square, filled with relics from the 15th and 16th century.

This afternoon we will enjoy our final lunch on board the train before arriving into Budapest. On our arrival evening we check back into the Four Seasons Gresham Palace (or similar) for a one-night stay before a celebratory farewell dinner toasting the success of the tour.

DAY
9

BUDAPEST

HUNGARY

Following breakfast on the final morning you will be transferred to the airport for onward flight departures.

Why not extend your stay in Budapest to explore the Hungarian capital at your leisure? Please contact us for hotel options and rates.

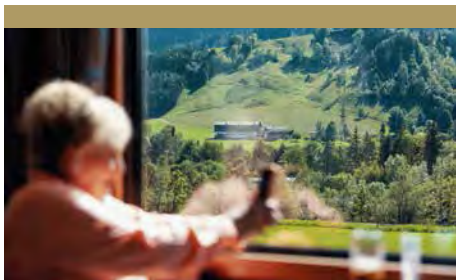






GOLDEN EAGLE DANUBE EXPRESS

WHAT'S INCLUDED IN THE TOUR PRICE



EXPERIENCED TOUR MANAGERS

Our experienced Tour Managers are selected for their travel knowledge and their organisational abilities allowing you to relax and enjoy your rail cruise. We receive exceptional passenger comments about our Tour Managers and their aim is to ensure you enjoy every minute of your holiday.

ARRIVAL AND DEPARTURE AIRPORT TRANSFERS

Arrival transfers from the international airport to our tour hotel, and departure transfers from our tour hotel to the airport are included.

HOTEL AND ON BOARD ACCOMMODATION

Although you will spend much of your time sightseeing or relaxing in the train's public areas, you will find your hotel room or cabin a welcome retreat at the end of a rewarding day. All hotels are of five-star standard, or the best available.

BREAKFAST, LUNCH AND DINNER DAILY

All meals are included, starting with dinner on the first day and ending with breakfast on the last day, unless otherwise stated. All departures feature one or two Restaurant Cars where you can enjoy the excellent waiter-served food and wine. Several times during the tour we will also sample authentic

local cuisine with wine and a selection of drinks off the train, which is also included in the tour price.

DRINKS WITH MEALS

A generous drinks allowance, both alcoholic and non-alcoholic, is included with lunch and dinner on and off the train.

ON BOARD SERVICE

You can expect service which is attentive, friendly and unintrusive. Your car attendants provide housekeeping and bedding turndown services to assist you and to ensure you are comfortable in your cabin. Complimentary tea, coffee and bottled drinking water are served to you in your cabin.

GUIDED OFF-TRAIN EXCURSIONS

The history and culture of the places we visit on our rail cruises will come alive through our expert local guides. All our tours include a wide-ranging sightseeing schedule to make the most of the time you have off the train and bring you closer to the culture, people and history of your destinations. We believe it is the special little touches that help create magical memories.

PERSONAL HEADSETS

On all the off-train excursions, to enhance your enjoyment and insights into the places you visit, you will be

provided with a lightweight personal headset on which to listen to your tour guide as you take in the sights. The range of the headset means that you do not need to worry about missing any of the guide's commentary on your excursion, even if you prefer to wander away from the group.

ON BOARD DOCTOR AND MEDICAL FACILITIES

To give you peace of mind our tours are accompanied by a Doctor who travels with us for the entire journey, so you can rest assured that medical assistance is always available. On call 24 hours a day, the doctor is on hand to give primary care as required. In almost every case, the Doctor will be English-speaking and be registered with the General Medical Council in the UK.

PORTERAGE

As you only have to unpack once, your luggage and belongings will stay with you on the train throughout the journey but, wherever necessary, portorage is included between the hotels and stations.

ALL GRATUITIES

You will not have to worry about tipping on or off the train on your rail journey with *Golden Eagle Luxury Trains* as all gratuities are included in the tour price.



GOLDEN EAGLE DANUBE EXPRESS

IMPORTANT INFORMATION ABOUT OUR TOURS

WHAT IS INCLUDED IN THE PRICE?

All accommodation as per the itinerary - both on board the train and in hotels; all meals starting with dinner on the first day; a wide selection of alcoholic and non-alcoholic drinks from the Bar Lounge Car; all arrival and departure transfers; guided off-train sightseeing excursions; the services of experienced Tour Leaders; all gratuities; and a Doctor travelling with the group.



WHAT IS NOT INCLUDED IN THE PRICE?

International and domestic airfares (unless part of the itinerary); visa and excess baggage charges; insurance. Personal expenses such as laundry or souvenirs. On some tours there may also be an occasional optional activity that needs to be paid for locally.

ACCESS TO WI-FI

Wi-Fi is available on board for guest use whilst travelling in Europe. The Wi-Fi connection is dependent on cellular signal and there will be times when we will be travelling through areas with limited or zero coverage. Therefore, please do not expect a reliable service when the train is moving through remote areas.

PASSPORT AND VISA INFORMATION

It is your responsibility to be in possession of a valid passport and visa for your trip. A passport with a minimum of 6 months validity is required for all our rail tours. Many of the remote and exotic countries we visit require visas. Visa costs are not included in the price of the tour and these must be purchased independently. This can often be an involved and time consuming process and, as this is such an important aspect of your holiday, we can assist you with advice and any supporting documentation.

We do not take any responsibility for any passengers in possession of incorrect or invalid visas. Please contact our Customer Services department for help and information. For customers in the United Kingdom we can put you in contact with our recommended visa support agency.

INSURANCE

It is a booking condition that you must be fully insured for any medical expenses that may be incurred whilst travelling. You will be asked to provide us with the name of your insurer and your policy number together with the 24-hour medical emergency assistance contact number. We will require this information at least six weeks prior to travelling with us.

VACCINATIONS

We will continue to look for the most up-to-date health and safety recommendations from both the World Health Organization (WHO) and international governments, including vaccination requirements for Covid-19, and will continue to update our policies accordingly for your added peace of mind.

ON BOARD DOCTOR

We provide a Doctor on board all our tours who is available 24-hours a day. They carry a fully stocked medical kit but it is your responsibility to ensure that you obtain any vaccinations, prescribed and precautionary medicine for the countries you are visiting before travelling with us.

INTERNATIONAL & DOMESTIC FLIGHTS

Flights are not included (unless part of the itinerary) but we can advise fares and book them for you if the flights originate in the UK. Please note that we do not advise that you book flights more than 60 days in advance of the tour departure date (see Booking Conditions).

HOTEL ACCOMMODATION

Hotel accommodation as described in the tour itinerary is included in the price of the tour. Room upgrades are available on request, subject to availability and at an additional cost.

ITINERARIES

Accommodation and tour itineraries are subject to change at any time due to circumstances beyond our control. Every effort will be made to operate tours as advertised and as per the rail timings received.



GOLDEN EAGLE DANUBE EXPRESS



SPECIAL REQUESTS

We pride ourselves on offering you a personalised and knowledgeable service and will make every effort to meet any of your special dietary, room or travel requests. Also we are very happy to cater for any special occasion or anniversary that you are celebrating whilst you are with us. Please advise us at the time of booking.

SINGLE TRAVELLERS

Many of our guests are single travellers and of course passengers travelling as small groups, families, couples or singles are all equally welcome.

GRATUITIES

All gratuities are included in the tour price and we strongly encourage passengers to refrain from offering gratuities to crew/hoteliers/drivers etc. We would prefer passengers to inform our management of any exceptional service received, and we will reward accordingly.

LANGUAGE

The primary tour language will be English. French, German and Spanish speaking guides are available on request at an additional cost. Please contact us for more information. Other languages may be available on request.

MEETING POINTS

Details of hotel/airport meeting points will be printed on the departure packs that will be sent to you one month prior to departure.

MINIMUM PASSENGER REQUIREMENTS

All our rail tours require a minimum number of passengers to operate. Should this not be reached, we will offer an alternative tour. If no alternative is suitable a full refund will be offered.

TRAVELLER HEALTH CONDITIONS

To get the most out of our tours, passengers must be able to walk at least a mile per day at normal walking speed. The traveller represents that neither he/she has any physical or mental condition or disability that could create a hazard to him/herself or other members of the tour.

We reserve the right to refuse travel to anyone who, in the opinion of the Tour Doctor or Tour Manager would be incapable of completing the tour or would cause unacceptable delays to the rest of the group. In these circumstances there would be no refund for any unused part of the tour. If in doubt, please call us for advice.

BOOKING CONDITIONS

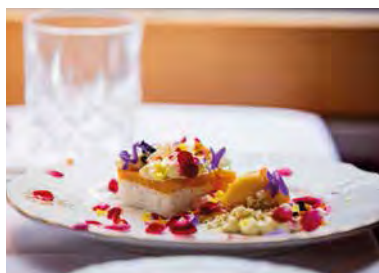
Our full booking conditions can be found at www.gettrains.com





GOLDEN EAGLE DANUBE EXPRESS

DINING ON BOARD



A world of culinary delights.

The *Golden Eagle Danube Express* Restaurant Cars are a delightful venue in which to enjoy meals skillfully prepared by our Executive Chef and his on board restaurant team using the very best in ingredients, locally sourced wherever possible. Depending on the number of guests on board, one or two of our Restaurant Cars will be on every departure.

Enjoy the delights of an on-train breakfast each morning - a wide selection of fruit, cereals, orange juice and cold plates are available from our bountiful buffet. Alternatively enjoy a cooked breakfast brought to your table by our waiting staff, all complemented by steaming hot tea and coffee.

For lunch and dinner, you will enjoy fine food, great wines and attentive service in the welcoming atmosphere of the Restaurant Car.

We offer a culinary experience that reflects the very essence of the countries we travel through, as well as international cuisine. Vegetarian and other dietary options are also available.

All our meals at lunch and dinner are complemented by an excellent choice of wines from around the world, personally selected by our Company Founder, Tim Littler, along with bottled water, beer and soft drinks.

Meals on board are a relaxed affair as the Restaurant Cars can accommodate all our guests in a single sitting. Throughout the journey there is an informal dress code, so you can enjoy our culinary experiences in convivial and relaxed surroundings and with our open-seating policy you can dine wherever, and with whomever, you please.



GOLDEN EAGLE DANUBE EXPRESS

RELAX IN OUR BAR LOUNGE CAR



The Social Heart of the *Golden Eagle Danube Express*: The Bar Lounge Car

Indulge in the ultimate luxury and comfort in the Bar Lounge Car, the social heart of the Golden Eagle Danube Express. This elegant haven is the perfect place to relax and embrace the leisurely pace of life on board.

Unwind in sumptuous surroundings as you watch the picturesque landscapes unfold outside your window. Engage in delightful conversations with fellow travellers, fostering new and lasting friendships. Whether you prefer to immerse yourself in a captivating novel or enjoy a friendly game of cards, the Bar Lounge Car offers an inviting ambiance for all.

Throughout your journey, you will receive printed daily itineraries detailing train arrival and departure

times, the latest weather forecasts for upcoming destinations, and comprehensive information on the next day's excursions.

As evening descends, let the soothing melodies of our resident pianist fill the air, enhancing the sophisticated atmosphere. The bar remains open until the last guest retires, ensuring that your evenings are filled with camaraderie and elegance.

Experience the perfect blend of relaxation, luxury, and adventure in the Bar Lounge Car of the Golden Eagle Danube Express, where every moment is designed to be unforgettable.



GOLDEN EAGLE DANUBE EXPRESS

SUPERIOR DELUXE CABINS



Our Superior Deluxe cabins, with private en-suite facilities, offer the ultimate in European rail accommodation in terms of space, facilities and comfort.

Limited to just 12 cabins per departure, each cabin offers comfortable daytime seating with a full length sofa and two additional chairs. The large cabin also benefits from two full-size picture windows, one of which is openable to add to the bright and airy feel of the interior.

bedroom with a UK-standard King Size double bed. All cabins have, as standard, a large double wardrobe with excellent storage space, individually controlled air-conditioning, lighting with dimmer switches, individual reading lights, in cabin Wi-Fi and USB ports, power sockets and a safe.

Each evening the cabin is transformed into a luxurious



GOLDEN EAGLE DANUBE EXPRESS



SUPERIOR DELUXE CABINS

- Cabins per car: 4
- Cabin length (inc. en-suite): 454cm (14'9")
- Cabin width: 190cm (6'2")
- Cabin area (inc. en-suite): 8.6 m² (93 ft²)
- Bed size: 190cm x 152cm (6'2" x 5'0")
- King Size bed (UK standard)
- Additional daytime seating with table
- Individually controlled air-conditioning and heating
- Two large picture windows
- Adjustable lighting
- Double wardrobe and Personal safe
- Wi-Fi & two USB ports
- Private en-suite bathroom with cubicle shower and WC



All images and plans shown are artist's impressions – please visit www.gettrains.com for latest updates.



GOLDEN EAGLE DANUBE EXPRESS

DELUXE CABINS



Deluxe Cabin - Day

Travel in some of the finest rail accommodation available in Europe.

Each Deluxe sleeper carriage has just five spacious yet intimate en-suite cabins offering every convenience and comfort so you may sit back, relax and enjoy the scenery as it rolls by.

Private bathrooms feature a shower with constant hot water, washbasin and toilet. There is a heated towel rail, shaver socket and hairdryer. A range of toiletries and a dressing gown are provided. Cabins have individually controlled air-conditioning, lighting with dimmer switches, individual reading lights, power sockets and a safe. Co-ordinated fabrics complement wood-panelled

walls and brass fittings. Two comfortable armchairs provide daytime seating and a free-standing chair adds flexibility. Cupboards and a full length wardrobe provide ample storage whilst the large picture window and full length mirror enhances the spacious feel. A second window will open for fresh air and for that perfect photo opportunity.

During dinner each evening the living room is converted into two comfortable lower beds by your attendant who is also on hand to bring you early morning tea or coffee.



GOLDEN EAGLE DANUBE EXPRESS



DELUXE CABINS SPECIFICATION

- 5 x 2-bed cabins per carriage
- Cabin size (inc. en-suite): 397cm x 195cm (13'0" x 6'4")
- Cabin area (inc. en-suite): 7.74m² (83 ft²)
- Bed size (each): 185cm x 80cm (6'1" x 2'7½")
- Private en-suite bathroom with cubicle shower and WC 77cm x 195cm 1.5m² (16 ft²)
- Remote controlled air-conditioning
- Two armchairs and a free-standing chair for daytime seating
- Large picture window – opens partially, perfect for photograph opportunities
- Full length wardrobe and power sockets

