



GOLDEN EAGLE LUXURY TRAINS

VOYAGES OF A LIFETIME BY PRIVATE TRAIN™

GRAND ALPINE EXPRESS

2025 - 2026 DEPARTURES



GOLDEN EAGLE DANUBE EXPRESS

GRAND ALPINE EXPRESS

HUNGARY - AUSTRIA - SWITZERLAND - ITALY - SLOVENIA



Dramatic mountain scenery, alpine meadows and beautiful lakes provide the continual backdrop for this magnificent tour by rail.

Soak up inspiring lakes and mountains scenery as we travel by private train through the stunning Alpine region of Central Europe.

From the classic capital cities of Budapest and Vienna, we venture deep into the Austrian Tyrol before heading into the valleys of the Swiss Alps and onwards through the Italian Lake District as we visit Como before heading into the lesser-known but equally beautiful country of Slovenia and its jewel, Lake Bled.

Traverse some of the most scenic railway lines in the world as the Golden Eagle Danube Express weaves its way through tunnels, across viaducts and over mountain passes. Journeys end will be in the stunning maritime city of Venice, an outstanding mix of Gothic and Renaissance palaces perched on the edge of the Italian coast. A perfect end to a memorable journey of alpine discovery.



GOLDEN EAGLE DANUBE EXPRESS

GRAND ALPINE EXPRESS



TOUR SCHEDULES

2025

May 2 – May 12

2026

May 1 – May 11

TOUR ITINERARY

- | | |
|----------------------------------|-----------------------------|
| DAY 1 Budapest | DAY 6 Lake Como |
| DAY 2 Budapest | DAY 7 Verona & Trieste |
| DAY 3 Vienna &
Semmering Pass | DAY 8 Lake Bled & Ljubljana |
| DAY 4 Lake Achen &
Innsbruck | DAY 9 Postojna & Venice |
| DAY 5 Zurich | DAY 10 Venice |
| | DAY 11 Venice |

BUDAPEST - VIENNA - LAKE ACHEN - INNSBRUCK - ZÜRICH
LAKE COMO - VERONA - TRIESTE - LAKE BLEĐ
LJUBLJANA - POSTOJNA - VENICE



DAY
1

BUDAPEST

HUNGARY

On arrivals day in Budapest, you will be met at the airport, train station or river ship landing stage and transferred to the Four Seasons Hotel Gresham Palace (or similar) for a two-night stay. Enjoy a welcome reception dinner in the elegant surrounds of this art nouveau landmark, with its panoramic views across the River Danube, where you can meet your fellow travellers on this highly anticipated journey through Alpine Europe.

DAY
2

BUDAPEST

HUNGARY

Budapest is actually two cities separated by the Danube. The old city of Buda and the imposing Royal Palace, dominates the city with stunning views across the Danube to the commercial heart of Pest. Our city tour includes the Castle District, St. Mathias Church, and Fishermen's Bastion. We will also see the Parliament, the Opera House, St Stephen's Cathedral, Heroes Square, and the City Park.

The rest of the day is at leisure where you can stroll along the banks of the Danube, visit the historic Great Market Hall with its endless variety of delicious foods and wines or head to one of the city's famous thermal baths for a rejuvenating dip.

Alternatively, you can relax at the hotel and indulge in the hotel's luxurious spa with infinity-edge pool or make use of the state-of-the-art fitness centre.

DAY
3

VIENNA

AUSTRIA

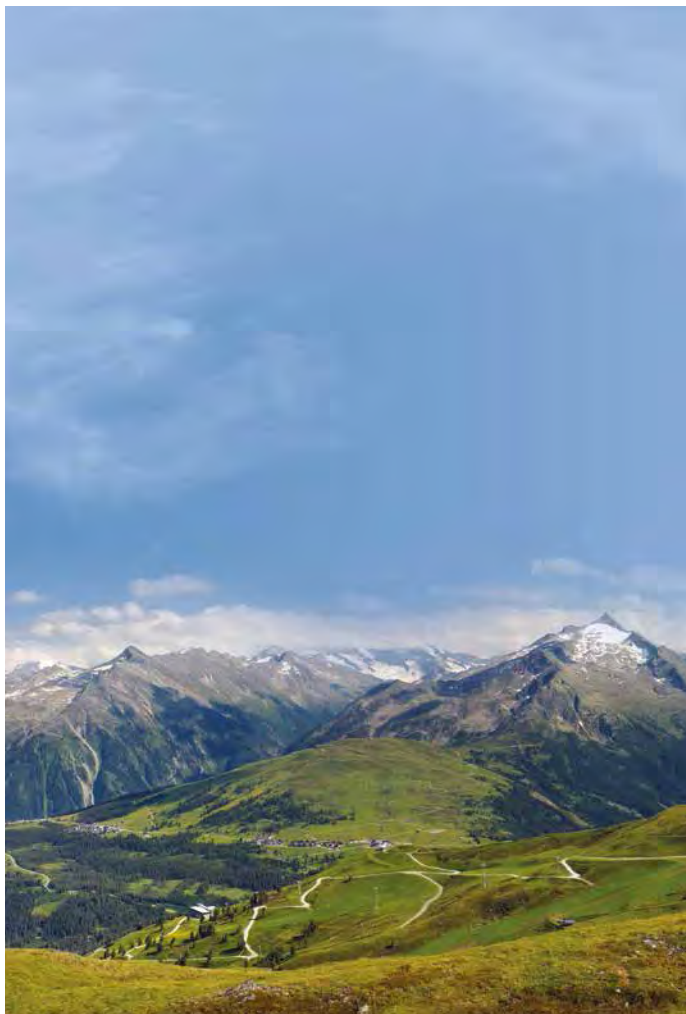
We enjoy a morning drinks reception in the impressive Royal Waiting Room at Budapest Nyugati station before boarding the Golden Eagle Danube Express for our morning departure. Settle into your cabin and later enjoy lunch as the train heads to Vienna.

The stunning capital city of Austria enthralls visitors with its rich heritage. We enjoy a walking tour through the seductive Old Town of elaborate palaces, renowned coffee houses, classical music and enchanting opera.

Today's programme will also allow you the option to visit the famous Schönbrunn Palace plus free time to explore this enchanting city for yourself. During the day we also enjoy a stunning private concert featuring the Vienna Supreme Orchestra.

Leaving Vienna early evening will be one of the real highlights of the journey.

Cameras at the ready as we climb over the stunning Semmering Pass with its 16 viaducts and 15 tunnels. This UNESCO World Heritage Site provides an unrivalled panorama from the train, a spectacle that transcends ordinary views.



DAY
4

LAKE ACHEN & INNSBRUCK

AUSTRIA

Enjoy a leisurely morning onboard the Danube Express as we continue our journey across Austria before arriving in Jenbach. After lunch take a breathtaking train ride to Lake Achen aboard the historic Achensee Railway, which is the oldest cog railway in Europe still steam operated. Upon arriving to Lake Achen (Achensee), we take a cruise on the water, including a delicious service of coffee and strudel cake.

From here we travel by bus the short distance (50 minutes approx.) to Innsbruck, capital of Austria's western state of Tyrol, a city in the Alps that has long been a destination for winter sports. We enjoy an informative walking tour of Innsbruck which is known, in particular, for its Imperial and modern architecture.

Our guests also have the option to take the Nordkette funicular (weather dependent) with its futuristic stations designed by architect Zaha Hadid, climbs up to 2,256m from the city centre for stunning bird eye views of the surrounding Alpine terrain.

DAY
5

THE VORARLBERG, AUSTRIA & ZÜRICH

SWITZERLAND

Another fantastic morning ahead to simply sit back, relax and watch the scenery of the Vorarlberg unfold in front of your eyes as we pass through St. Anton before crossing through Liechtenstein and then into Switzerland where we run along the whole of the Lake of Zürich before arriving in the city itself.

The city of Zürich, a global centre for banking and finance, lies at the north end of Lake Zürich in northern Switzerland.

The picturesque lanes of the central Altstadt (Old Town), on either side of the Limmat River, reflect its pre-medieval history. Waterfront promenades like the Limmatquai follow the river toward the 17th-century Rathaus (Town Hall).

Whilst in the city we will enjoy a traditional Swiss fondue tasting.



DAY
6

ST GOTTHARD PASS & LAKE COMO

SWITZERLAND & ITALY

Today is one for the cameras! This morning we pass along the shorelines of Lakes Zug and Lucerne before starting the very scenic climb to the St Gotthard Pass. Once through the old St Gotthard tunnel we descend through Lugano towards Lake Como in Italy.

Lake Como is surrounded by high mountains and dramatic cliffs, so it is quite different from the other Italian lakes. A narrow road runs up its western coast towards Switzerland and sits up high above the water, with the towns dropping down beneath it.

Renowned for its beautifully kept public gardens and historic villas, it is easy to see why so many celebrities love Lake Como. We enjoy a leisurely boat cruise on Lake Como and visit the beautiful lakeside town of Bellagio for lunch with stunning views of the glistening lake followed by a short visit to Como Town.

DAY
7

VERONA & TRIESTE

ITALY

This morning after running along the south shore of Lake Garda we arrive in Verona. Famous for being the setting of Shakespeare's 'Romeo and Juliet', we enjoy an informative walking tour of Verona's famous sites.

We lunch on board and later in the afternoon we arrive into Trieste, the Italian port for a short tour. We stop at the imposing Miramare Castle and also visit the vast Piazza Unità d'Italia, the main town square. Standing on a hill overlooking Trieste is the famous Church of San Giusto built around a medieval complex and dates back to the 13th century. We will go inside the church for a close-up view of the splendid Byzantine-style architecture enriched with precious mosaics.

DAY
8

LAKE BLEĐ & LJUBLJANA

SLOVENIA

This morning be awake early as our train climbs through the Julian Alps to Lake Bled which, with its island, church and castle is an incredibly picturesque alpine lake situated at the foothills of the Alps in north-western Slovenia.

From here we travel onto Ljubljana as we have lunch on board and discover a delightful combination of ancient architecture and a youthful culture of the Slovenian capital.

Our afternoon tour of the city includes visits to Preseren Square, Three Bridges and Dragon Bridge and features a panoramic river cruise, with strawberries and champagne served, on the Ljubljanica river.



DAY
9

POSTOJNA & VENICE

SLOVENIA & ITALY

This morning we visit Postojna caves for an exclusive private tour as we ride an underground train deep into the cave and tour the network of magnificent halls, a myriad of cave formations and mysterious animals. Immerse yourself in the atmospheric ambiance, heightened by the soulful notes of a saxophonist echoing through the cavernous spaces.

We then head south towards Mestre where our train curves to the left onto the 3-mile causeway across the Venice Lagoon and into Venice Santa Lucia station located on the Grand Canal, arriving after lunch. We say farewell to our train crew and transfer by boat to your centrally located hotel for a two-night stay.

DAY
10

VENICE

ITALY

Venice is a truly captivating and romantic city. Its unrivalled beauty takes away the breath of first-time visitors and regulars alike. Today enjoy a walking tour around the highlights of this spectacular city. Walk through the winding

lanes beside the Grand Canal to St. Mark's Square, which for 1,000 years was the heart of Venetian life. We also see St. Mark's Basilica and stroll through the Rialto Market. A trip to Venice would not be complete without a gondola ride along Venice's famous canals (we include a 30 minute gondola in the programme).

Alternatively enjoy the city at your own pace today. Perhaps stroll through the artists' district of Dorsoduro, stopping to take in the city's most breath-taking views from the Accademia Bridge.

In the evening we will enjoy a farewell dinner giving you the opportunity to reflect on your journey through this beautifully scenic part of Europe.

DAY
11

VENICE

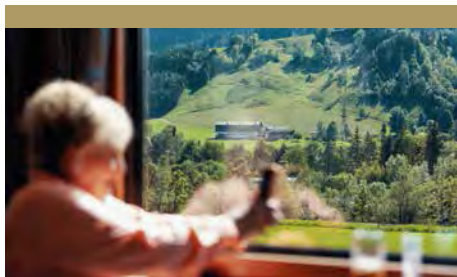
ITALY

On the final morning following breakfast in the hotel you will be transferred to the airport for onward departures. Why not extend your stay in Venice to explore more of the city at your leisure? Please contact us for hotel options, touring programmes and rates.



GOLDEN EAGLE DANUBE EXPRESS

WHAT'S INCLUDED IN THE TOUR PRICE



EXPERIENCED TOUR MANAGERS

Our experienced Tour Managers are selected for their travel knowledge and their organisational abilities allowing you to relax and enjoy your rail cruise. We receive exceptional passenger comments about our Tour Managers and their aim is to ensure you enjoy every minute of your holiday.

ARRIVAL AND DEPARTURE AIRPORT TRANSFERS

Arrival transfers from the international airport to our tour hotel, and departure transfers from our tour hotel to the airport are included.

HOTEL AND ON BOARD ACCOMMODATION

Although you will spend much of your time sightseeing or relaxing in the train's public areas, you will find your hotel room or cabin a welcome retreat at the end of a rewarding day. All hotels are of five-star standard, or the best available.

BREAKFAST, LUNCH AND DINNER DAILY

All meals are included, starting with dinner on the first day and ending with breakfast on the last day, unless otherwise stated. All departures feature one or two Restaurant Cars where you can enjoy the excellent waiter-served food and wine. Several times during the tour we will also sample authentic

local cuisine with wine and a selection of drinks off the train, which is also included in the tour price.

DRINKS WITH MEALS

A generous drinks allowance, both alcoholic and non-alcoholic, is included with lunch and dinner on and off the train.

ON BOARD SERVICE

You can expect service which is attentive, friendly and unintrusive. Your car attendants provide housekeeping and bedding turndown services to assist you and to ensure you are comfortable in your cabin. Complimentary tea, coffee and bottled drinking water are served to you in your cabin.

GUIDED OFF-TRAIN EXCURSIONS

The history and culture of the places we visit on our rail cruises will come alive through our expert local guides. All our tours include a wide-ranging sightseeing schedule to make the most of the time you have off the train and bring you closer to the culture, people and history of your destinations. We believe it is the special little touches that help create magical memories.

PERSONAL HEADSETS

On all the off-train excursions, to enhance your enjoyment and insights into the places you visit, you will be

provided with a lightweight personal headset on which to listen to your tour guide as you take in the sights. The range of the headset means that you do not need to worry about missing any of the guide's commentary on your excursion, even if you prefer to wander away from the group.

ON BOARD DOCTOR AND MEDICAL FACILITIES

To give you peace of mind our tours are accompanied by a Doctor who travels with us for the entire journey, so you can rest assured that medical assistance is always available. On call 24 hours a day, the doctor is on hand to give primary care as required. In almost every case, the Doctor will be English-speaking and be registered with the General Medical Council in the UK.

PORTERAGE

As you only have to unpack once, your luggage and belongings will stay with you on the train throughout the journey but, wherever necessary, portorage is included between the hotels and stations.

ALL GRATUITIES

You will not have to worry about tipping on or off the train on your rail journey with *Golden Eagle Luxury Trains* as all gratuities are included in the tour price.



GOLDEN EAGLE DANUBE EXPRESS

IMPORTANT INFORMATION ABOUT OUR TOURS

WHAT IS INCLUDED IN THE PRICE?

All accommodation as per the itinerary - both on board the train and in hotels; all meals starting with dinner on the first day; a wide selection of alcoholic and non-alcoholic drinks from the Bar Lounge Car; all arrival and departure transfers; guided off-train sightseeing excursions; the services of experienced Tour Leaders; all gratuities; and a Doctor travelling with the group.



WHAT IS NOT INCLUDED IN THE PRICE?

International and domestic airfares (unless part of the itinerary); visa and excess baggage charges; insurance. Personal expenses such as laundry or souvenirs. On some tours there may also be an occasional optional activity that needs to be paid for locally.

ACCESS TO WI-FI

Wi-Fi is available on board for guest use whilst travelling in Europe. The Wi-Fi connection is dependent on cellular signal and there will be times when we will be travelling through areas with limited or zero coverage. Therefore, please do not expect a reliable service when the train is moving through remote areas.

PASSPORT AND VISA INFORMATION

It is your responsibility to be in possession of a valid passport and visa for your trip. A passport with a minimum of 6 months validity is required for all our rail tours. Many of the remote and exotic countries we visit require visas. Visa costs are not included in the price of the tour and these must be purchased independently. This can often be an involved and time consuming process and, as this is such an important aspect of your holiday, we can assist you with advice and any supporting documentation.

We do not take any responsibility for any passengers in possession of incorrect or invalid visas. Please contact our Customer Services department for help and information. For customers in the United Kingdom we can put you in contact with our recommended visa support agency.

INSURANCE

It is a booking condition that you must be fully insured for any medical expenses that may be incurred whilst travelling. You will be asked to provide us with the name of your insurer and your policy number together with the 24-hour medical emergency assistance contact number. We will require this information at least six weeks prior to travelling with us.

VACCINATIONS

We will continue to look for the most up-to-date health and safety recommendations from both the World Health Organization (WHO) and international governments, including vaccination requirements for Covid-19, and will continue to update our policies accordingly for your added peace of mind.

ON BOARD DOCTOR

We provide a Doctor on board all our tours who is available 24-hours a day. They carry a fully stocked medical kit but it is your responsibility to ensure that you obtain any vaccinations, prescribed and precautionary medicine for the countries you are visiting before travelling with us.

INTERNATIONAL & DOMESTIC FLIGHTS

Flights are not included (unless part of the itinerary) but we can advise fares and book them for you if the flights originate in the UK. Please note that we do not advise that you book flights more than 60 days in advance of the tour departure date (see Booking Conditions).

HOTEL ACCOMMODATION

Hotel accommodation as described in the tour itinerary is included in the price of the tour. Room upgrades are available on request, subject to availability and at an additional cost.

ITINERARIES

Accommodation and tour itineraries are subject to change at any time due to circumstances beyond our control. Every effort will be made to operate tours as advertised and as per the rail timings received.



GOLDEN EAGLE DANUBE EXPRESS



SPECIAL REQUESTS

We pride ourselves on offering you a personalised and knowledgeable service and will make every effort to meet any of your special dietary, room or travel requests. Also we are very happy to cater for any special occasion or anniversary that you are celebrating whilst you are with us. Please advise us at the time of booking.

SINGLE TRAVELLERS

Many of our guests are single travellers and of course passengers travelling as small groups, families, couples or singles are all equally welcome.

GRATUITIES

All gratuities are included in the tour price and we strongly encourage passengers to refrain from offering gratuities to crew/hoteliers/drivers etc. We would prefer passengers to inform our management of any exceptional service received, and we will reward accordingly.

LANGUAGE

The primary tour language will be English. French, German and Spanish speaking guides are available on request at an additional cost. Please contact us for more information. Other languages may be available on request.

MEETING POINTS

Details of hotel/airport meeting points will be printed on the departure packs that will be sent to you one month prior to departure.

MINIMUM PASSENGER REQUIREMENTS

All our rail tours require a minimum number of passengers to operate. Should this not be reached, we will offer an alternative tour. If no alternative is suitable a full refund will be offered.

TRAVELLER HEALTH CONDITIONS

To get the most out of our tours, passengers must be able to walk at least a mile per day at normal walking speed. The traveller represents that neither he/she has any physical or mental condition or disability that could create a hazard to him/herself or other members of the tour.

We reserve the right to refuse travel to anyone who, in the opinion of the Tour Doctor or Tour Manager would be incapable of completing the tour or would cause unacceptable delays to the rest of the group. In these circumstances there would be no refund for any unused part of the tour. If in doubt, please call us for advice.

BOOKING CONDITIONS

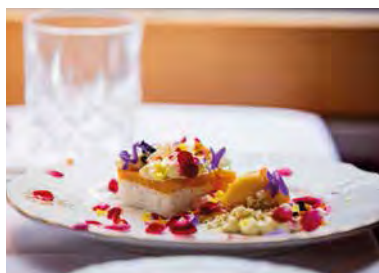
Our full booking conditions can be found at www.gettrains.com





GOLDEN EAGLE DANUBE EXPRESS

DINING ON BOARD



A world of culinary delights.

The *Golden Eagle Danube Express* Restaurant Cars are a delightful venue in which to enjoy meals skillfully prepared by our Executive Chef and his on board restaurant team using the very best in ingredients, locally sourced wherever possible. Depending on the number of guests on board, one or two of our Restaurant Cars will be on every departure.

Enjoy the delights of an on-train breakfast each morning - a wide selection of fruit, cereals, orange juice and cold plates are available from our bountiful buffet. Alternatively enjoy a cooked breakfast brought to your table by our waiting staff, all complemented by steaming hot tea and coffee.

For lunch and dinner, you will enjoy fine food, great wines and attentive service in the welcoming atmosphere of the Restaurant Car.

We offer a culinary experience that reflects the very essence of the countries we travel through, as well as international cuisine. Vegetarian and other dietary options are also available.

All our meals at lunch and dinner are complemented by an excellent choice of wines from around the world, personally selected by our Company Founder, Tim Littler, along with bottled water, beer and soft drinks.

Meals on board are a relaxed affair as the Restaurant Cars can accommodate all our guests in a single sitting. Throughout the journey there is an informal dress code, so you can enjoy our culinary experiences in convivial and relaxed surroundings and with our open-seating policy you can dine wherever, and with whomever, you please.



GOLDEN EAGLE DANUBE EXPRESS

RELAX IN OUR BAR LOUNGE CAR



The Social Heart of the *Golden Eagle Danube Express*: The Bar Lounge Car

Indulge in the ultimate luxury and comfort in the Bar Lounge Car, the social heart of the Golden Eagle Danube Express. This elegant haven is the perfect place to relax and embrace the leisurely pace of life on board.

Unwind in sumptuous surroundings as you watch the picturesque landscapes unfold outside your window. Engage in delightful conversations with fellow travellers, fostering new and lasting friendships. Whether you prefer to immerse yourself in a captivating novel or enjoy a friendly game of cards, the Bar Lounge Car offers an inviting ambiance for all.

Throughout your journey, you will receive printed daily itineraries detailing train arrival and departure

times, the latest weather forecasts for upcoming destinations, and comprehensive information on the next day's excursions.

As evening descends, let the soothing melodies of our resident pianist fill the air, enhancing the sophisticated atmosphere. The bar remains open until the last guest retires, ensuring that your evenings are filled with camaraderie and elegance.

Experience the perfect blend of relaxation, luxury, and adventure in the Bar Lounge Car of the Golden Eagle Danube Express, where every moment is designed to be unforgettable.



GOLDEN EAGLE DANUBE EXPRESS

SUPERIOR DELUXE CABINS



Our Superior Deluxe cabins, with private en-suite facilities, offer the ultimate in European rail accommodation in terms of space, facilities and comfort.

Limited to just 12 cabins per departure, each cabin offers comfortable daytime seating with a full length sofa and two additional chairs. The large cabin also benefits from two full-size picture windows, one of which is openable to add to the bright and airy feel of the interior.

bedroom with a UK-standard King Size double bed. All cabins have, as standard, a large double wardrobe with excellent storage space, individually controlled air-conditioning, lighting with dimmer switches, individual reading lights, in cabin Wi-Fi and USB ports, power sockets and a safe.

Each evening the cabin is transformed into a luxurious



GOLDEN EAGLE DANUBE EXPRESS



SUPERIOR DELUXE CABINS

- Cabins per car: 4
- Cabin length (inc. en-suite): 454cm (14'9")
- Cabin width: 190cm (6'2")
- Cabin area (inc. en-suite): 8.6 m² (93 ft²)
- Bed size: 190cm x 152cm (6'2" x 5'0")
- King Size bed (UK standard)
- Additional daytime seating with table
- Individually controlled air-conditioning and heating
- Two large picture windows
- Adjustable lighting
- Double wardrobe and Personal safe
- Wi-Fi & two USB ports
- Private en-suite bathroom with cubicle shower and WC



All images and plans shown are artist's impressions – please visit www.gettrains.com for latest updates.



GOLDEN EAGLE DANUBE EXPRESS

DELUXE CABINS



Deluxe Cabin - Day

Travel in some of the finest rail accommodation available in Europe.

Each Deluxe sleeper carriage has just five spacious yet intimate en-suite cabins offering every convenience and comfort so you may sit back, relax and enjoy the scenery as it rolls by.

Private bathrooms feature a shower with constant hot water, washbasin and toilet. There is a heated towel rail, shaver socket and hairdryer. A range of toiletries and a dressing gown are provided. Cabins have individually controlled air-conditioning, lighting with dimmer switches, individual reading lights, power sockets and a safe. Co-ordinated fabrics complement wood-panelled

walls and brass fittings. Two comfortable armchairs provide daytime seating and a free-standing chair adds flexibility. Cupboards and a full length wardrobe provide ample storage whilst the large picture window and full length mirror enhances the spacious feel. A second window will open for fresh air and for that perfect photo opportunity.

During dinner each evening the living room is converted into two comfortable lower beds by your attendant who is also on hand to bring you early morning tea or coffee.



GOLDEN EAGLE DANUBE EXPRESS



DELUXE CABINS SPECIFICATION

- 5 x 2-bed cabins per carriage
- Cabin size (inc. en-suite): 397cm x 195cm (13'0" x 6'4")
- Cabin area (inc. en-suite): 7.74m² (83 ft²)
- Bed size (each): 185cm x 80cm (6'1" x 2'7½")
- Private en-suite bathroom with cubicle shower and WC 77cm x 195cm 1.5m² (16 ft²)
- Remote controlled air-conditioning
- Two armchairs and a free-standing chair for daytime seating
- Large picture window – opens partially, perfect for photograph opportunities
- Full length wardrobe and power sockets

