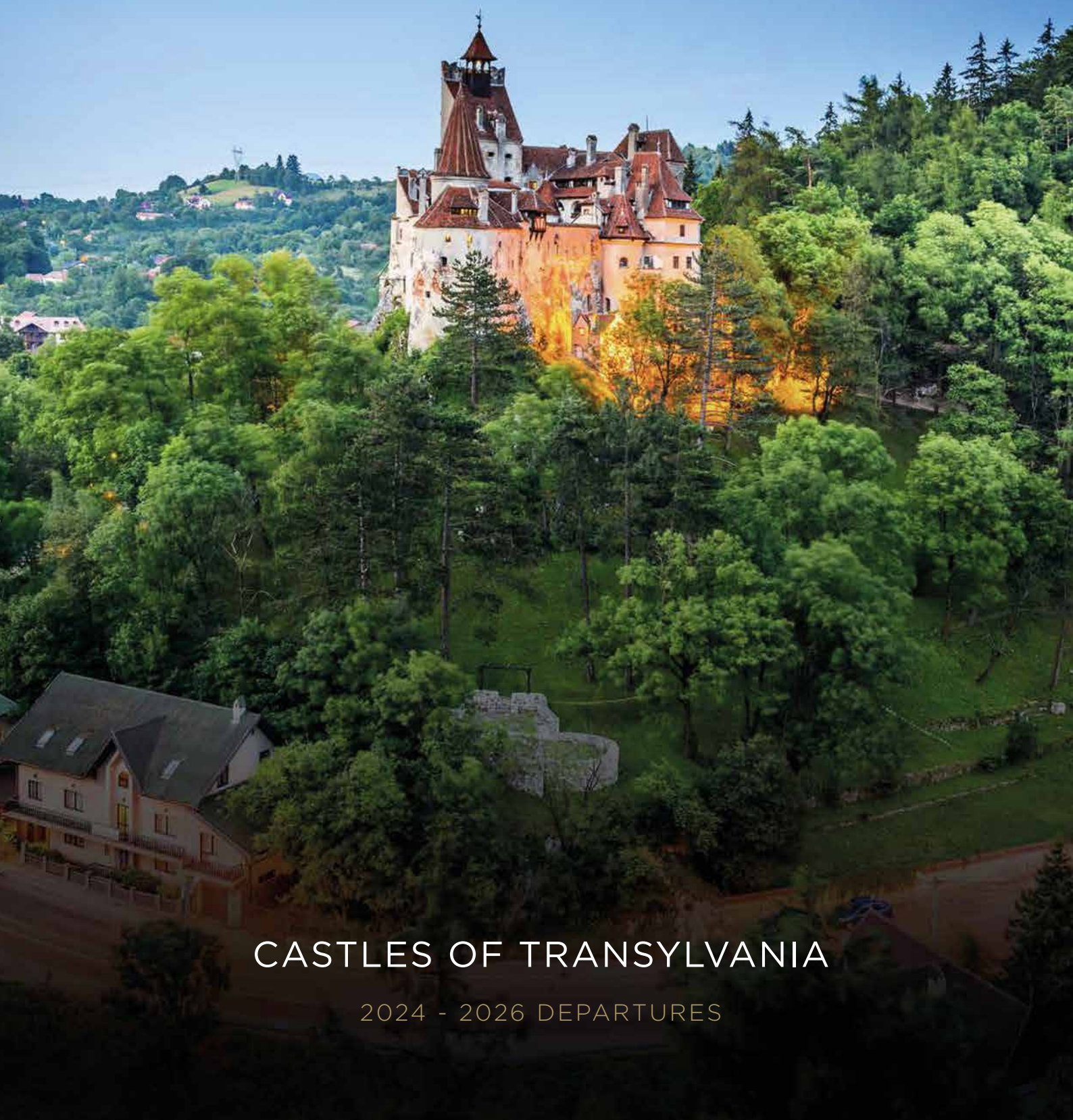




GOLDEN EAGLE LUXURY TRAINS

VOYAGES OF A LIFETIME BY PRIVATE TRAIN™



CASTLES OF TRANSYLVANIA

2024 - 2026 DEPARTURES



GOLDEN EAGLE DANUBE EXPRESS

CASTLES OF TRANSYLVANIA

TURKEY - BULGARIA - ROMANIA - HUNGARY



Vajdahunyad Castle, Budapest



Maiden Tower, Istanbul



Peles Castle, Sinaia

Join us on this medieval voyage through the heart of Transylvania as we sample a delectable blend of colourful culture and medieval castles, amidst the forested and mountainous landscapes of this seldom-visited region.

The majestic cities at either end of this spectacular voyage bless us with completely contrasting, yet equally as magnificent architecture, with the exquisite mosques of Istanbul and the elegant baroque buildings of Budapest. Whilst here, we explore the fascinating histories and age-old cultures of these intriguing cities, shaped by the empires of times gone by.

Relaxing in the elegant surroundings on board the Golden Eagle Danube Express, our voyage meanders through beautiful countryside and mountain ranges on our exploration of Transylvania. Encompassing the fabled birthplace and gothic residence of Dracula, we explore the enchanting medieval towns of the region, adorned by their 16th century houses, fairy-tale turrets and historic cobbles streets.



GOLDEN EAGLE DANUBE EXPRESS

CASTLES OF TRANSYLVANIA



TOUR SCHEDULES

2024

October 20 - October 26

2026

May 29 - June 4

September 23 - September 29

October 26 - November 1

2025

May 30 - June 5

November 2 - November 8

TOUR ITINERARY

DAY 1 Istanbul

DAY 2 Istanbul

DAY 3 Veliko Tarnovo

DAY 4 Sinaia & Brasov

DAY 5 Sighisoara & Sibiu

DAY 6 Kecskemet, Lajosmizse
& Budapest

DAY 7 Budapest

ISTANBUL - VELIKO TARNOVO - SINAIA - BRASOV - SIGHISOARA
SIBIU - KECSKEMET - LAJOSMIZSE - BUDAPEST



DAY
1

ISTANBUL

TURKEY

Arrive into Istanbul where you will be met and transferred to the iconic five-star Four Seasons hotel (or similar). This evening we will enjoy a welcome reception dinner, giving you the opportunity to meet your fellow travellers.

Why not extend your stay in Istanbul to explore more of the city at your leisure? Please contact us for hotel options, touring programmes and rates.



DAY
2

ISTANBUL

TURKEY

Istanbul is the fabled city that spans Asia and Europe. Today we see how old meets new, east meets west when we enjoy a walking tour through the old central quarters of Istanbul, followed by the choice of visiting one of Istanbul's two magnificent mosques.

Freedom of Choice Option 1: One of the most famous monuments in both the Turkish and Islamic worlds, the Sultan Ahmet Mosque (the Blue Mosque) is a superb creation in the classical Ottoman style and features six towering minarets and 260 windows illuminating its vast main chamber, which is decorated with more than 20,000 Iznik tiles.

Freedom of Choice Option 2: Hagia Sophia was built in the 6th century by the Emperor Justinian and was one of the largest basilicas in the Christian world. After the Ottoman conquest, it was converted to a mosque and is today one of the most magnificent Grand Mosques in the world. Take a few moments to linger here to admire the fine Byzantine mosaics.

Late afternoon we join our private train, the Golden Eagle Danube Express, to begin our rail journey through Bulgaria and Romania to Budapest.



DAY
3

VELIKO TARNOVO

BULGARIA

This morning we enjoy the views from our private train as we climb over the Shipka Pass and arrive at our first stop Veliko Tarnovo, Bulgaria's ancient capital. Nestled in a magnificent mountain setting, the stone houses seem perched one above the other on the steep banks of the Yantra River. A tour includes the superbly preserved medieval Tsarevets Hill and Castle and there is free time to wander through the narrow alleyways of the ancient city.

This evening relax in the Bar Lounge Car before dinner is served as our train continues through the scenic landscape as we head across the Romanian border.

DAY
4

SINAIA & BRASOV

ROMANIA

Overnight the train twists and turns as it climbs over the Carpathian Mountains and threads its way through the dramatic landscape with crystal clear mountain streams.

This morning we arrive in Sinaia for a tour of Peles Castle. The castle is a masterpiece of German new-Renaissance architecture, considered by many one of the most stunning castles in Europe. Commissioned by King Carol I in 1873 and completed in 1883, the castle served as the summer residence of the royal family until 1947. Its 160 rooms are adorned with the finest examples of European art, Murano crystal chandeliers, German stained-glass windows and Cordoba leather-covered walls.



Returning to our private train for lunch we continue the short distance to Brasov. Founded by the Teutonic Knights in 1211 and located at the intersection of trade routes linking the Ottoman Empire and western Europe, Brasov has interesting and turbulent history and is rich in gothic, baroque and renaissance

architecture, where here, we enjoy an afternoon tour. Following on from the program in Brasov, this evening we make a special visit to Bran Castle. Surrounded by an aura of mystery and legend and perched high atop a 200-foot-high rock, the 14th century castle owes its fame to its imposing towers and turrets as well as to the myth created around Bram Stoker's Dracula. Following a tour of the castle and its surroundings we will enjoy a private gala dinner tonight inside the castle walls.





DAY
5

SIGHISOARA & SIBIU

ROMANIA

This morning we arrive into Sighisoara for a walking tour of the town's main highlights. A World Heritage site rumoured to be the birthplace of Dracula, it is one of the best-preserved fortified medieval towns in Europe. Burgher houses and ornate churches line its cobbled streets.

We return to the train for lunch as we continue onto Sibiu, known specifically for its Germanic architecture in the Old Town due to the legacy of 12th-century Saxon settlers. Around the city today can be seen the remains of medieval walls and towers, including the 13th-century Council Tower which connects the two main squares.

Tonight, we enjoy a Farewell Dinner on board as we travel across the Great Hungarian Plain.



DAY
6

KECSKEMET & LAJOSMIZSE

HUNGARY

This morning we get the opportunity to explore Kecskemét, a fascinating city at the geographical centre of Hungary before the train heads to Lajosmizse for a spectacular 'Pusztá' horse show. We then arrive late afternoon at the romantic and historic Hungarian capital, Budapest, located on the banks of the magnificent Danube, where we will enjoy a one-night stay in the five-star Four Seasons Gresham Palace hotel, a unique art nouveau landmark which combines historical elegance with ultra-modern comforts. This evening we will enjoy a farewell reception dinner giving you the opportunity to reflect on your journey through this fascinating part of Europe.

DAY
7

BUDAPEST

HUNGARY

Following breakfast in the hotel you will be transferred to the airport for onward departures.

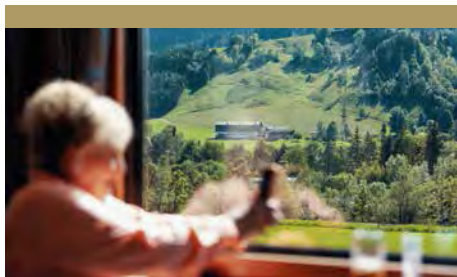
Why not extend your stay in Budapest to explore more of the city at your leisure? Please contact us for hotel options, touring programmes and rates.





GOLDEN EAGLE DANUBE EXPRESS

WHAT'S INCLUDED IN THE TOUR PRICE



EXPERIENCED TOUR MANAGERS

Our experienced Tour Managers are selected for their travel knowledge and their organisational abilities allowing you to relax and enjoy your rail cruise. We receive exceptional passenger comments about our Tour Managers and their aim is to ensure you enjoy every minute of your holiday.

ARRIVAL AND DEPARTURE AIRPORT TRANSFERS

Arrival transfers from the international airport to our tour hotel, and departure transfers from our tour hotel to the airport are included.

HOTEL AND ON BOARD ACCOMMODATION

Although you will spend much of your time sightseeing or relaxing in the train's public areas, you will find your hotel room or cabin a welcome retreat at the end of a rewarding day. All hotels are of five-star standard, or the best available.

BREAKFAST, LUNCH AND DINNER DAILY

All meals are included, starting with dinner on the first day and ending with breakfast on the last day, unless otherwise stated. All departures feature one or two Restaurant Cars where you can enjoy the excellent waiter-served food and wine. Several times during the tour we will also sample authentic

local cuisine with wine and a selection of drinks off the train, which is also included in the tour price.

DRINKS WITH MEALS

A generous drinks allowance, both alcoholic and non-alcoholic, is included with lunch and dinner on and off the train.

ON BOARD SERVICE

You can expect service which is attentive, friendly and unintrusive. Your car attendants provide housekeeping and bedding turndown services to assist you and to ensure you are comfortable in your cabin. Complimentary tea, coffee and bottled drinking water are served to you in your cabin.

GUIDED OFF-TRAIN EXCURSIONS

The history and culture of the places we visit on our rail cruises will come alive through our expert local guides. All our tours include a wide-ranging sightseeing schedule to make the most of the time you have off the train and bring you closer to the culture, people and history of your destinations. We believe it is the special little touches that help create magical memories.

PERSONAL HEADSETS

On all the off-train excursions, to enhance your enjoyment and insights into the places you visit, you will be

provided with a lightweight personal headset on which to listen to your tour guide as you take in the sights. The range of the headset means that you do not need to worry about missing any of the guide's commentary on your excursion, even if you prefer to wander away from the group.

ON BOARD DOCTOR AND MEDICAL FACILITIES

To give you peace of mind our tours are accompanied by a Doctor who travels with us for the entire journey, so you can rest assured that medical assistance is always available. On call 24 hours a day, the doctor is on hand to give primary care as required. In almost every case, the Doctor will be English-speaking and be registered with the General Medical Council in the UK.

PORTERAGE

As you only have to unpack once, your luggage and belongings will stay with you on the train throughout the journey but, wherever necessary, portorage is included between the hotels and stations.

ALL GRATUITIES

You will not have to worry about tipping on or off the train on your rail journey with *Golden Eagle Luxury Trains* as all gratuities are included in the tour price.



GOLDEN EAGLE DANUBE EXPRESS

IMPORTANT INFORMATION ABOUT OUR TOURS

WHAT IS INCLUDED IN THE PRICE?

All accommodation as per the itinerary - both on board the train and in hotels; all meals starting with dinner on the first day; a wide selection of alcoholic and non-alcoholic drinks from the Bar Lounge Car; all arrival and departure transfers; guided off-train sightseeing excursions; the services of experienced Tour Leaders; all gratuities; and a Doctor travelling with the group.



WHAT IS NOT INCLUDED IN THE PRICE?

International and domestic airfares (unless part of the itinerary); visa and excess baggage charges; insurance. Personal expenses such as laundry or souvenirs. On some tours there may also be an occasional optional activity that needs to be paid for locally.

ACCESS TO WI-FI

Wi-Fi is available on board for guest use whilst travelling in Europe. The Wi-Fi connection is dependent on cellular signal and there will be times when we will be travelling through areas with limited or zero coverage. Therefore, please do not expect a reliable service when the train is moving through remote areas.

PASSPORT AND VISA INFORMATION

It is your responsibility to be in possession of a valid passport and visa for your trip. A passport with a minimum of 6 months validity is required for all our rail tours. Many of the remote and exotic countries we visit require visas. Visa costs are not included in the price of the tour and these must be purchased independently. This can often be an involved and time consuming process and, as this is such an important aspect of your holiday, we can assist you with advice and any supporting documentation.

We do not take any responsibility for any passengers in possession of incorrect or invalid visas. Please contact our Customer Services department for help and information. For customers in the United Kingdom we can put you in contact with our recommended visa support agency.

INSURANCE

It is a booking condition that you must be fully insured for any medical expenses that may be incurred whilst travelling. You will be asked to provide us with the name of your insurer and your policy number together with the 24-hour medical emergency assistance contact number. We will require this information at least six weeks prior to travelling with us.

VACCINATIONS

We will continue to look for the most up-to-date health and safety recommendations from both the World Health Organization (WHO) and international governments, including vaccination requirements for Covid-19, and will continue to update our policies accordingly for your added peace of mind.

ON BOARD DOCTOR

We provide a Doctor on board all our tours who is available 24-hours a day. They carry a fully stocked medical kit but it is your responsibility to ensure that you obtain any vaccinations, prescribed and precautionary medicine for the countries you are visiting before travelling with us.

INTERNATIONAL & DOMESTIC FLIGHTS

Flights are not included (unless part of the itinerary) but we can advise fares and book them for you if the flights originate in the UK. Please note that we do not advise that you book flights more than 60 days in advance of the tour departure date (see Booking Conditions).

HOTEL ACCOMMODATION

Hotel accommodation as described in the tour itinerary is included in the price of the tour. Room upgrades are available on request, subject to availability and at an additional cost.

ITINERARIES

Accommodation and tour itineraries are subject to change at any time due to circumstances beyond our control. Every effort will be made to operate tours as advertised and as per the rail timings received.



GOLDEN EAGLE DANUBE EXPRESS



SPECIAL REQUESTS

We pride ourselves on offering you a personalised and knowledgeable service and will make every effort to meet any of your special dietary, room or travel requests. Also we are very happy to cater for any special occasion or anniversary that you are celebrating whilst you are with us. Please advise us at the time of booking.

SINGLE TRAVELLERS

Many of our guests are single travellers and of course passengers travelling as small groups, families, couples or singles are all equally welcome.

GRATUITIES

All gratuities are included in the tour price and we strongly encourage passengers to refrain from offering gratuities to crew/hoteliers/drivers etc. We would prefer passengers to inform our management of any exceptional service received, and we will reward accordingly.

LANGUAGE

The primary tour language will be English. French, German and Spanish speaking guides are available on request at an additional cost. Please contact us for more information. Other languages may be available on request.

MEETING POINTS

Details of hotel/airport meeting points will be printed on the departure packs that will be sent to you one month prior to departure.

MINIMUM PASSENGER REQUIREMENTS

All our rail tours require a minimum number of passengers to operate. Should this not be reached, we will offer an alternative tour. If no alternative is suitable a full refund will be offered.

TRAVELLER HEALTH CONDITIONS

To get the most out of our tours, passengers must be able to walk at least a mile per day at normal walking speed. The traveller represents that neither he/she has any physical or mental condition or disability that could create a hazard to him/herself or other members of the tour.

We reserve the right to refuse travel to anyone who, in the opinion of the Tour Doctor or Tour Manager would be incapable of completing the tour or would cause unacceptable delays to the rest of the group. In these circumstances there would be no refund for any unused part of the tour. If in doubt, please call us for advice.

BOOKING CONDITIONS

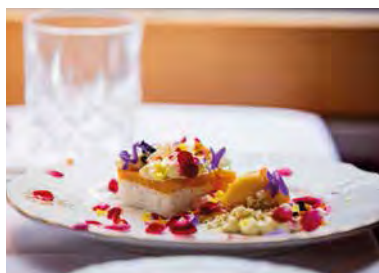
Our full booking conditions can be found at www.gettrains.com





GOLDEN EAGLE DANUBE EXPRESS

DINING ON BOARD



A world of culinary delights.

The *Golden Eagle Danube Express* Restaurant Cars are a delightful venue in which to enjoy meals skillfully prepared by our Executive Chef and his on board restaurant team using the very best in ingredients, locally sourced wherever possible. Depending on the number of guests on board, one or two of our Restaurant Cars will be on every departure.

Enjoy the delights of an on-train breakfast each morning - a wide selection of fruit, cereals, orange juice and cold plates are available from our bountiful buffet. Alternatively enjoy a cooked breakfast brought to your table by our waiting staff, all complemented by steaming hot tea and coffee.

For lunch and dinner, you will enjoy fine food, great wines and attentive service in the welcoming atmosphere of the Restaurant Car.

We offer a culinary experience that reflects the very essence of the countries we travel through, as well as international cuisine. Vegetarian and other dietary options are also available.

All our meals at lunch and dinner are complemented by an excellent choice of wines from around the world, personally selected by our Company Founder, Tim Littler, along with bottled water, beer and soft drinks.

Meals on board are a relaxed affair as the Restaurant Cars can accommodate all our guests in a single sitting. Throughout the journey there is an informal dress code, so you can enjoy our culinary experiences in convivial and relaxed surroundings and with our open-seating policy you can dine wherever, and with whomever, you please.



GOLDEN EAGLE DANUBE EXPRESS

RELAX IN OUR BAR LOUNGE CAR



The Social Heart of the *Golden Eagle Danube Express*: The Bar Lounge Car

Indulge in the ultimate luxury and comfort in the Bar Lounge Car, the social heart of the Golden Eagle Danube Express. This elegant haven is the perfect place to relax and embrace the leisurely pace of life on board.

Unwind in sumptuous surroundings as you watch the picturesque landscapes unfold outside your window. Engage in delightful conversations with fellow travellers, fostering new and lasting friendships. Whether you prefer to immerse yourself in a captivating novel or enjoy a friendly game of cards, the Bar Lounge Car offers an inviting ambiance for all.

Throughout your journey, you will receive printed daily itineraries detailing train arrival and departure

times, the latest weather forecasts for upcoming destinations, and comprehensive information on the next day's excursions.

As evening descends, let the soothing melodies of our resident pianist fill the air, enhancing the sophisticated atmosphere. The bar remains open until the last guest retires, ensuring that your evenings are filled with camaraderie and elegance.

Experience the perfect blend of relaxation, luxury, and adventure in the Bar Lounge Car of the Golden Eagle Danube Express, where every moment is designed to be unforgettable.



GOLDEN EAGLE DANUBE EXPRESS

SUPERIOR DELUXE CABINS



Our Superior Deluxe cabins, with private en-suite facilities, offer the ultimate in European rail accommodation in terms of space, facilities and comfort.

Limited to just 12 cabins per departure, each cabin offers comfortable daytime seating with a full length sofa and two additional chairs. The large cabin also benefits from two full-size picture windows, one of which is openable to add to the bright and airy feel of the interior.

bedroom with a UK-standard King Size double bed. All cabins have, as standard, a large double wardrobe with excellent storage space, individually controlled air-conditioning, lighting with dimmer switches, individual reading lights, in cabin Wi-Fi and USB ports, power sockets and a safe.

Each evening the cabin is transformed into a luxurious



GOLDEN EAGLE DANUBE EXPRESS



SUPERIOR DELUXE CABINS

- Cabins per car: 4
- Cabin length (inc. en-suite): 454cm (14'9")
- Cabin width: 190cm (6'2")
- Cabin area (inc. en-suite): 8.6 m² (93 ft²)
- Bed size: 190cm x 152cm (6'2" x 5'0")
- King Size bed (UK standard)
- Additional daytime seating with table
- Individually controlled air-conditioning and heating
- Two large picture windows
- Adjustable lighting
- Double wardrobe and Personal safe
- Wi-Fi & two USB ports
- Private en-suite bathroom with cubicle shower and WC



All images and plans shown are artist's impressions – please visit www.gettrains.com for latest updates.



GOLDEN EAGLE DANUBE EXPRESS

DELUXE CABINS



Deluxe Cabin - Day

Travel in some of the finest rail accommodation available in Europe.

Each Deluxe sleeper carriage has just five spacious yet intimate en-suite cabins offering every convenience and comfort so you may sit back, relax and enjoy the scenery as it rolls by.

Private bathrooms feature a shower with constant hot water, washbasin and toilet. There is a heated towel rail, shaver socket and hairdryer. A range of toiletries and a dressing gown are provided. Cabins have individually controlled air-conditioning, lighting with dimmer switches, individual reading lights, power sockets and a safe. Co-ordinated fabrics complement wood-panelled

walls and brass fittings. Two comfortable armchairs provide daytime seating and a free-standing chair adds flexibility. Cupboards and a full length wardrobe provide ample storage whilst the large picture window and full length mirror enhances the spacious feel. A second window will open for fresh air and for that perfect photo opportunity.

During dinner each evening the living room is converted into two comfortable lower beds by your attendant who is also on hand to bring you early morning tea or coffee.



GOLDEN EAGLE DANUBE EXPRESS



DELUXE CABINS SPECIFICATION

- 5 x 2-bed cabins per carriage
- Cabin size (inc. en-suite): 397cm x 195cm (13'0" x 6'4")
- Cabin area (inc. en-suite): 7.74m² (83 ft²)
- Bed size (each): 185cm x 80cm (6'1" x 2'7½")
- Private en-suite bathroom with cubicle shower and WC 77cm x 195cm 1.5m² (16 ft²)
- Remote controlled air-conditioning
- Two armchairs and a free-standing chair for daytime seating
- Large picture window – opens partially, perfect for photograph opportunities
- Full length wardrobe and power sockets

